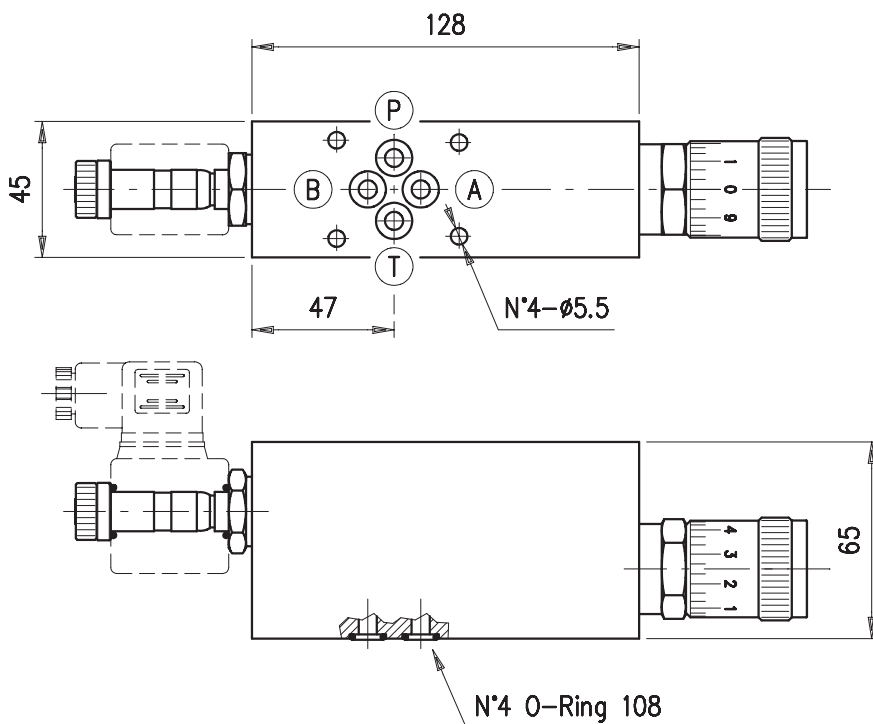


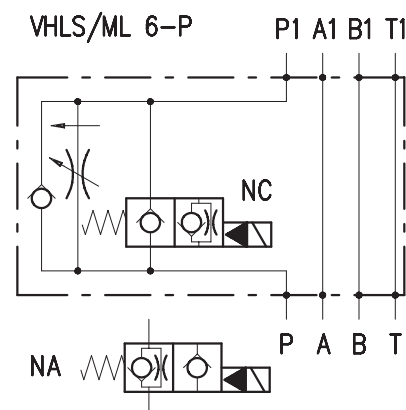
FLOW REGULATOR PRESSURE COMPENSATED VHLS /ML 6-38



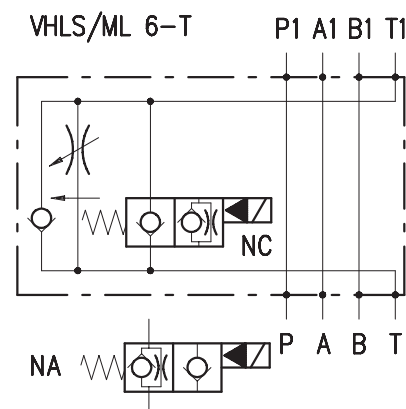
• DIMENSIONS (mm)



• HYDRAULIC DIAGRAM



• ASSEMBLY DIAGRAM



• DESCRIPTION

High-low speed valves, sandwich mounting NG6.

• OPERATION

These valves are designed to provide adjusted delivery in one direction and free return flow in the opposite direction. An electric valve allows for adjustment cut-off in order to obtain a free flow.

• PERFORMANCE

Capacity:

- Maximum flow: 35 l/min.
- Adjusted flow: 25 l/min.

Maximum pressure:

- aluminium body: 210 bar
- Solenoids: BE/... see page Z.2001.100

Working temperature:

- Minimum -25°C max 90°C with standard BUNAN gaskets
- Minimum -20°C max 200°C with VITON gaskets on request

• RECOMMENDATIONS

Fluid: best use mineral oil with viscosity ranging between 10 and 200 cSt

Filter: see page Z.9000.000.

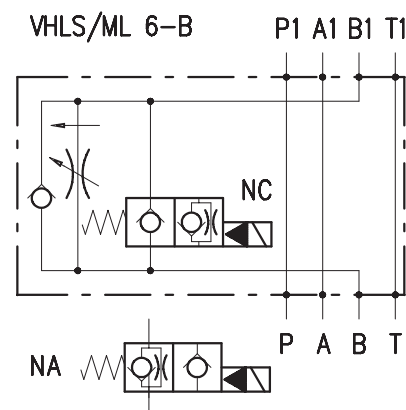
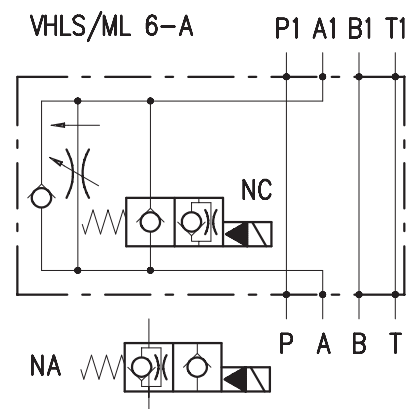
Weight: 2.45 kg

Cartridge used:

- Pressure adjustment cartridge: see page 8.1000.100
- Electric valve: see page L.1100.100

Material: internal components made out of high-grade steel duly treated and fabricated.

• CROSS SECTION

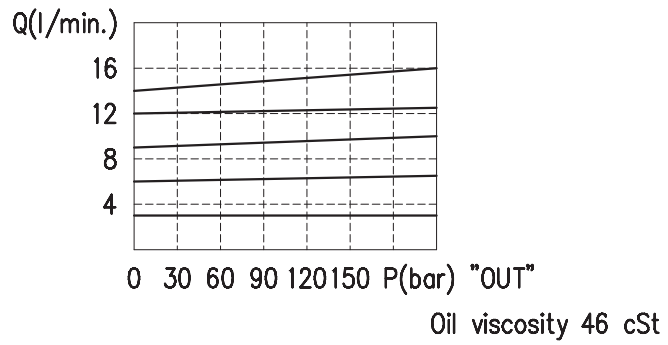
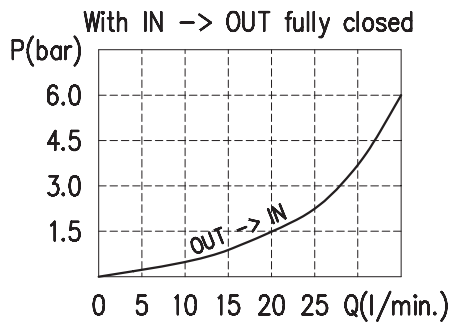


For more information please ask our technical office.

Variations and modifications of technical features and dimensions are reserved. **OLEOSTAR S.p.A.** also reserves the right to stop production of each and any model listed in the catalogue with no notice.

Copyrights on the text contained herein belong to **OLEOSTAR S.p.A.** . Partial and full reproductions or copies of this catalogue are forbidden.

• RATING DIAGRAMS



• CODE NUMBER

