

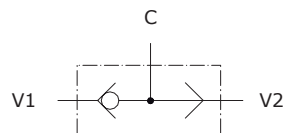
Type VT shuttle valves

- Shuttle valves
- Ball type

Technical specifications and diagrams are measured with mineral oil ISO VG32 at 50°C (122°F) temperature.

	VT 14	VT 38	VT 12	VT 34	VT 100	
Nominal flow	35 l/min (9.3 US gpm)	50 l/min (13.2 US gpm)	90 l/min (23.8 US gpm)	140 l/min (37 US gpm)	180 l/min (47.6 US gpm)	
Max. pressure	350 bar (5100 psi)					
Fluid	mineral based oil					
Viscosity	from 10 to 200 cSt					
Max. level of contamination	18/16/13 ISO4406					
Fluid temperature	with NBR seals: from -20°C (-4°F) to 80°C (176°F)					
Environmental temp. for working conditions	-40°C (-40°F) to 100°C (212°F)					
Weight	Steel	0.27 kg (0.59 lb)	0.464 kg (1.02 lb)	0.74 kg (1.63 lb)	1.406 kg (3.1 lb)	1.87 kg (4.12 lb)

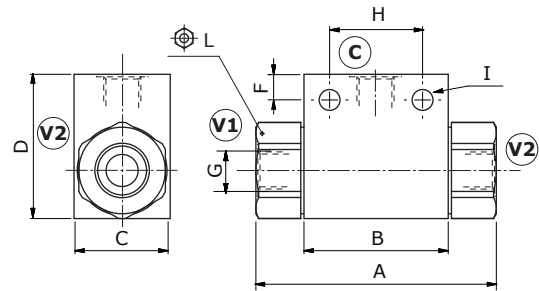
NOTE - For different conditions, please contact Walvoil Sales Dpt.



Dimensions

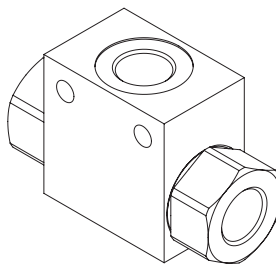
Dimensions are in mm-in

Valve type	A	B	C	D	E	F	G	H	I	L
VT 14	69 2.71	36 1.42	25 0.98	35 1.38	22.5 0.88	7.5 0.29	G 1/4	25 0.98	5.5 0.22	22
VT 38	75 2.95	45 1.77	30 1.18	45 1.77	30 1.18	8 0.31	G 3/8	29 1.14	6.5 0.25	27
VT 12	94 3.7	57 2.24	35 1.38	50 1.97	32 1.26	9 0.35	G 1/2	36 1.42	5.5 0.22	30
VT 34	100 3.94	65 2.56	50 1.97	60 2.36	37.5 1.48	6.5 0.25	G 3/4	50 1.97	6.5 0.25	41
VT 100	126 4.96	80 3.15	50 1.97	80 3.15	54.5 2.14	11 0.43	G 1	60 2.36	10.5 0.41	46



Ordering codes and description composition

Port size
VT 14



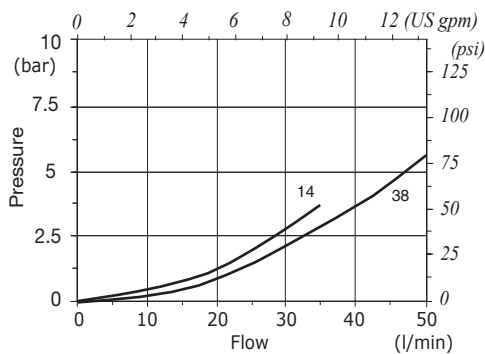
1 VT complete valves

TYPE	CODE	DESCRIPTION
VT14	1323012100	Steel body, G1/4 ports
VT38	1323022100	Steel body, G3/8 ports
VT12	1323032100	Steel body, G1/2 ports
VT34	1323042100	Steel body, G3/4 ports
VT100	1323052100	Steel body, G1 ports

For different configurations and SAE thread please contact our Sales Dpt.

Rating diagrams

VT14-38 pressure drop vs. flow



VT12-34-100 pressure drop vs. flow

