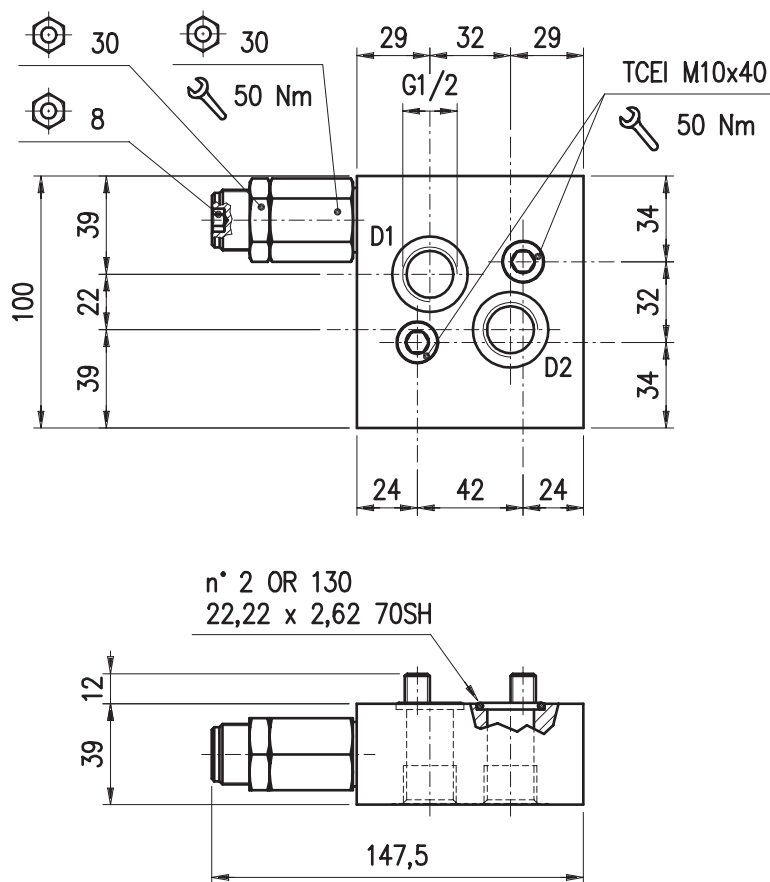
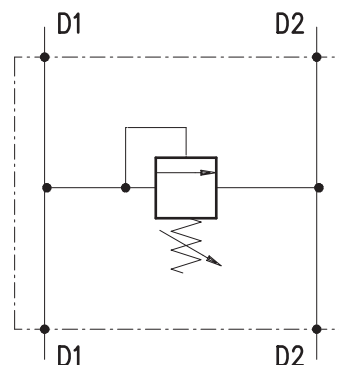


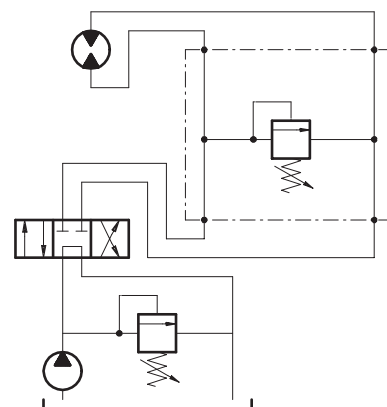
**• DIMENSIONS (mm)**



**• HYDRAULIC DIAGRAM**



**• ASSEMBLY DIAGRAM**



**• DESCRIPTION**

Single cross-line relief valve. Differential control, conical seat, face mounting for Sauer-Danfoss motor OMS series, including O-Rings and screws.

**• OPERATION**

Allows pressure relief on delivery pipes to engines and cylinders.

**• PERFORMANCE**

**Maximum flow:** 60 l/min.

**Maximum Pressure:**

- 210 bar aluminium valve
- 350 bar steel valve

**Application range with standard springs:**

- 5 ÷ 210 bar; pressure increase = 47 bar/turn (test setting: 150 bar at 5 l/min.) STANDARD
- 50 ÷ 350 bar; pressure increase = 99 bar/turn (test setting: 250 bar at 5 l/min.)

To perform setting of the valve see the pressure drop / flow diagram.

**Hysteresis:** 85% of the valve setting for 1 L. flow capacity per minute.

**Oil leak between P and T:** disregarable.

**Working temperature:**

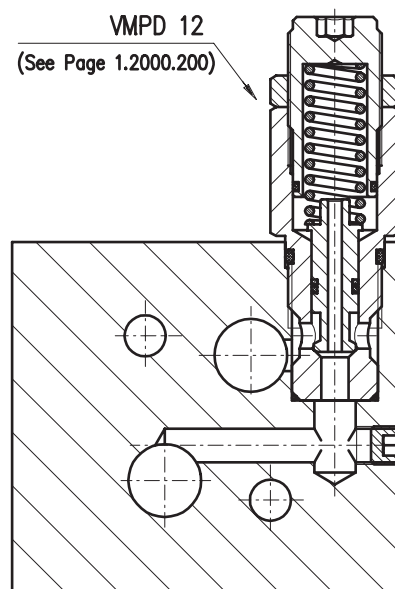
- min. -25°C max. 90°C with standard BUNAN gaskets
- min. -20°C max. 200°C with optional VITON gaskets

**Spare parts KIT:**

A) Screws and Seals (Ordering code: 5KTM0OMS00)

B) External Seals for cartridges type VMPD 12 (Ordering code: 5KT1200300)

**• CROSS SECTION**



**• RECOMMENDATIONS**

**Fluid:** best use mineral oil with viscosity ranging between 10 and 200 cSt.

**Filter:** see page Z.9000.000.

**Weight:**

- aluminium valves 0.9kg
- steel valves 1.7kg

**Cartridge used:** see page 1.2000.200.

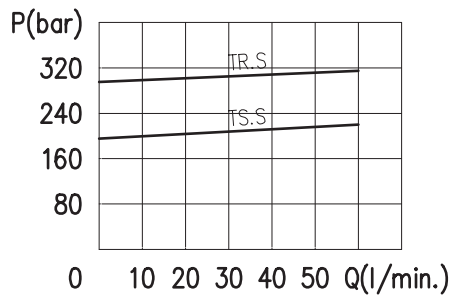
**Material:** made out of high grade steel duly treated and fabricated.

For more information please ask our technical office .

Variations and modifications of technical features and dimensions are reserved. **OLEOSTAR S.p.A.** also reserves the right to stop production of each and any model listed in the catalogue with no notice.

Copyrights on the text contained herein belong to **OLEOSTAR S.p.A.** . Partial and full reproductions or copies of this catalogue are forbidden.

**• RATING DIAGRAMS**



Oil viscosity 46 cSt

**• CODE NUMBER**

VADDF/OMS/S/12/ □□.S / □□

Pressure settings (bar)

TS) 5+210  
TR) 50+350

Body material

\_ Aluminium  
ac Steel