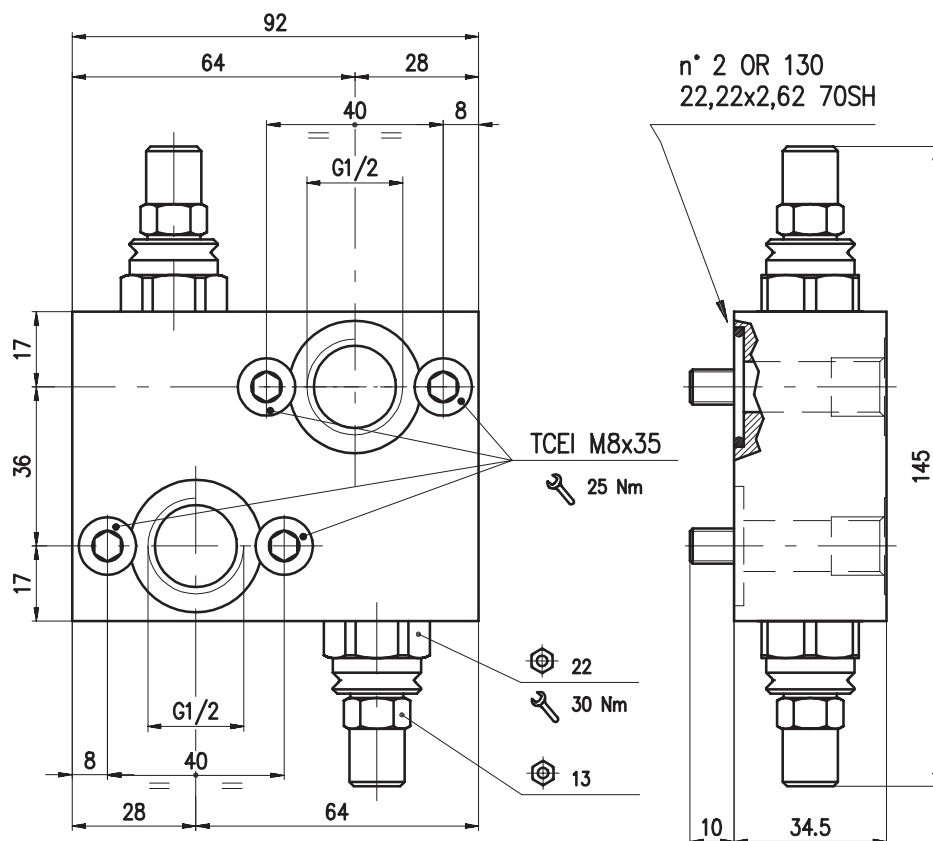
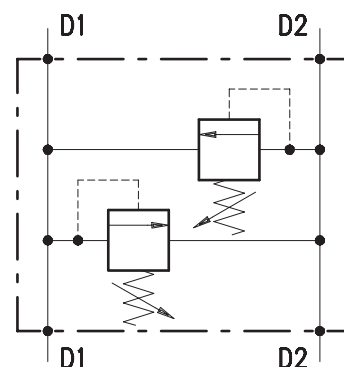


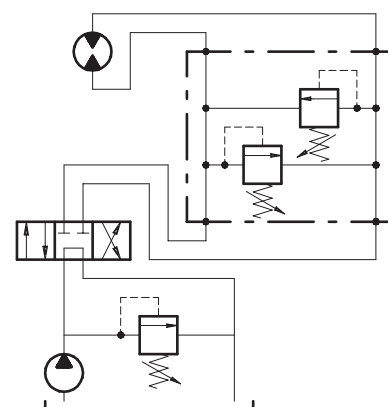
• **DIMENSIONS (mm)**



• **HYDRAULIC DIAGRAM**



• **ASSEMBLY DIAGRAM**



• **DESCRIPTION**

Dual cross-line relief valve. Direct acting, poppet type, face mounting for Sauer-Danfoss motor OMP-OMPL-OMR series, including O-rings and screws.

• **OPERATION**

Allows pressure relief on delivery pipes to engines and cylinders.

• **PERFORMANCE**

**Maximum flow:** 50 l/min.

**Maximum Pressure:**

- 210 bar (aluminium valves)
- 350 bar (steel valves)

**Application range with standard springs:**

- 0 ÷ 80 bar; pressure increase= 12 bar/turn (test setting: 20 bar at 5 l/min.)
- 50 ÷ 130 bar; pressure increase= 19.5 bar/turn (test setting: 60 bar at 5 l/min.)
- 120 ÷ 250 bar; pressure increase= 37.5 bar/turn (test setting: 150 bar at 5 l/min.) STANDARD

**Hysteresis:** 90% of the valve setting for 1 L. flow capacity per minute.

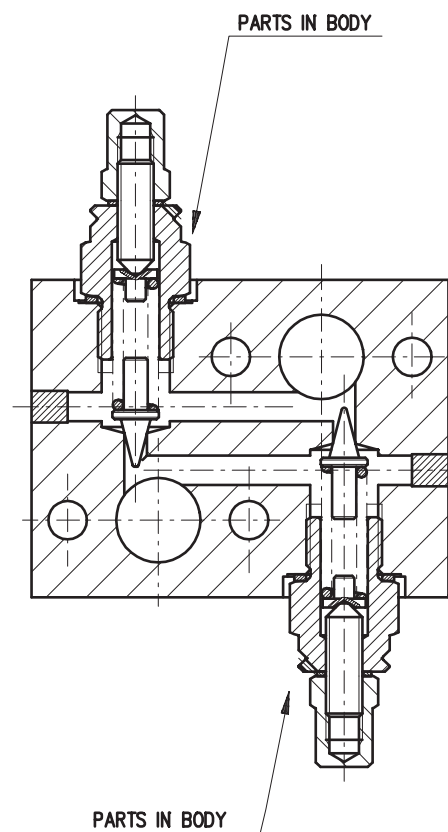
To perform setting of the valve see the pressure drop / flow diagram.

**Working temperature:**

- min. -25°C max. 90°C with standard BUNAN gaskets
- min. -20°C max. 200°C with optional VITON gaskets

**Spare Parts KIT:** Screws and Seals (Ordering code: 5KTM00MR00)

• **CROSS SECTION**



## • RECOMMENDATIONS

**Fluid:** best use mineral oil with viscosity ranging between 10 and 200 cSt.

**Filter:** see page Z.9000.000.

**Weight:**

- 0.9 kg aluminium valves
- 1.5 kg steel valves

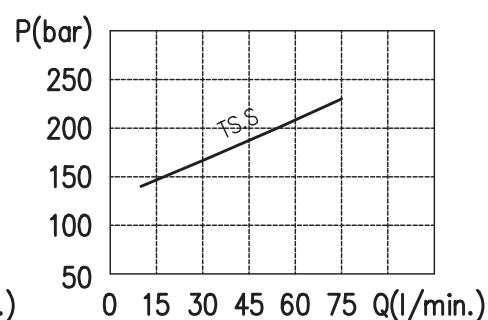
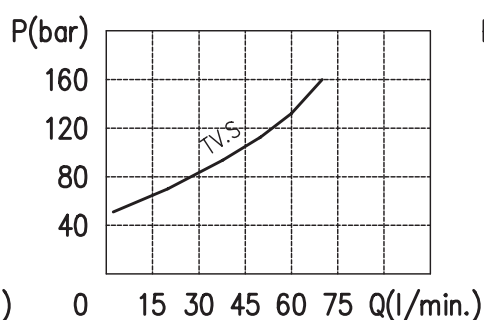
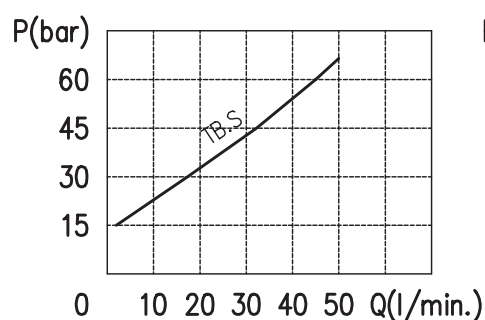
**Material:** internal components made out of high grade steel duly treated and fabricated.

For more information please ask our technical office .

Variations and modifications of technical features and dimensions are reserved. **OLEOSTAR S.p.A.** also reserves the right to stop production of each and any model listed in the catalogue with no notice.

Copyrights on the text contained herein belong to **OLEOSTAR S.p.A.** . Partial and full reproductions or copies of this catalogue are forbidden.

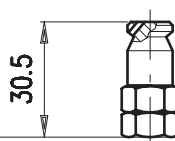
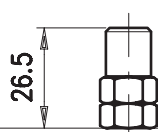
## • RATING DIAGRAMS



## • ADJUSTMENTS

S

W



## • CODE NUMBER

VAIF /D1D/ 12/OMR / □□ . □ / □□

Pressure settings (bar)

Adjustment

Body material

TB) 0÷80  
TV) 50÷130  
TS) 120÷250

S  
W

\_ Aluminium  
ac Steel