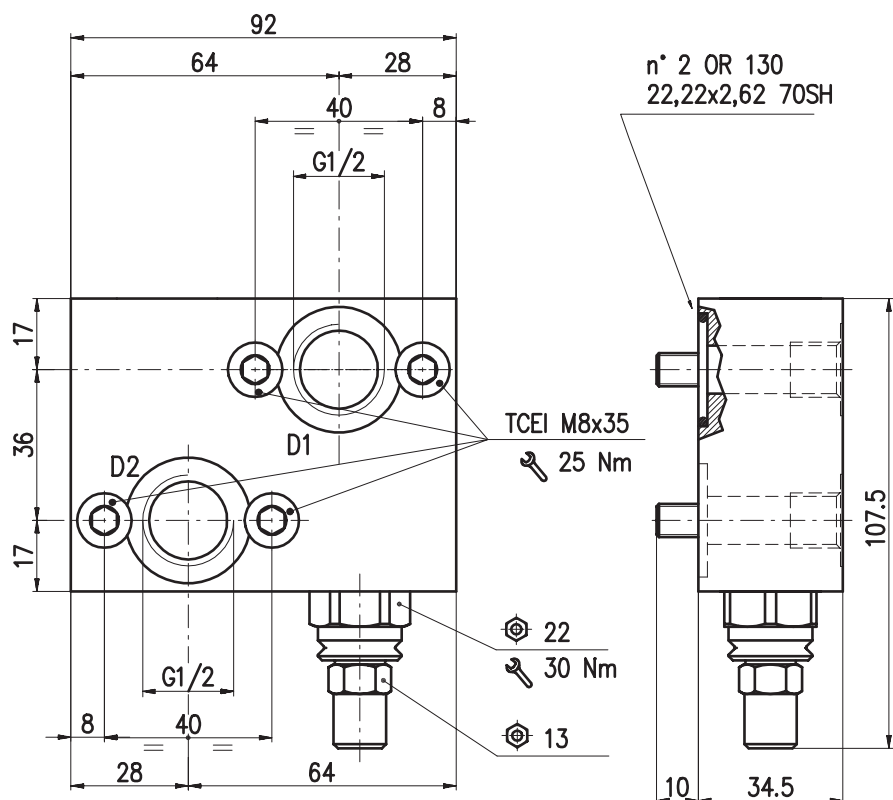
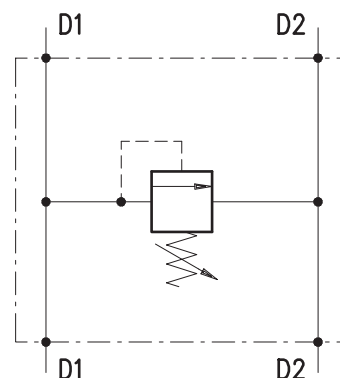


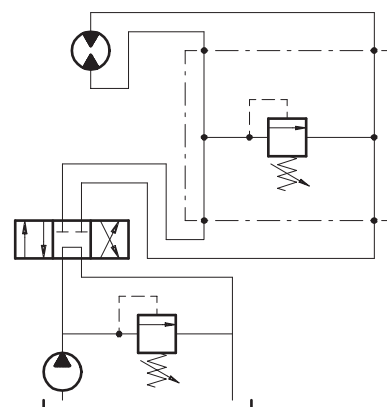
• **DIMENSIONS (mm)**



• **HYDRAULIC DIAGRAM**



• **ASSEMBLY DIAGRAM**



• **DESCRIPTION**

Single cross-line relief valve. Direct acting, poppet type, face mounting for Sauer-Danfoss motor OMP-OMPL-OMR series, including O-rings and screws

• **OPERATION**

Allows pressure relief on delivery pipes to engines and cylinders.

• **PERFORMANCE**

Maximum flow: 50 l/min.

Maximum Pressure:

- 210 bar (aluminium valves)
- 350 bar (steel valves)

Application range with standard springs:

- 0 ÷ 80 bar; pressure increase= 12 bar/turn (test setting: 20 bar at 5 l/min.)
- 50 ÷ 130 bar; pressure increase= 19.5 bar/turn (test setting: 60 bar at 5 l/min.)
- 120 ÷ 250 bar; pressure increase= 37.5 bar/turn (test setting: 150 bar at 5 l/min.) STANDARD

Hysteresis: 90% of the valve setting for 1 L. flow capacity per minute.

To perform setting of the valve see the pressure drop / flow diagram.

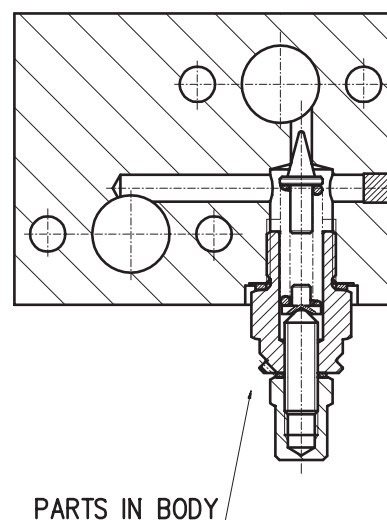
Working temperature:

- min. -25°C max. 90°C with standard BUNAN gaskets
- min. -20°C max. 200°C with optional VITON gaskets

Spare Parts KIT:

Screws and Seals (Ordering code: 5KTM0OMR00)

• **CROSS SECTION**



• RECOMMENDATIONS

Fluid: best use mineral oil with viscosity ranging between 10 and 200 cSt.

Filter: see page Z.9000.000.

Weight:

– 0.7 kg aluminium valves

– 1.3 kg steel valves

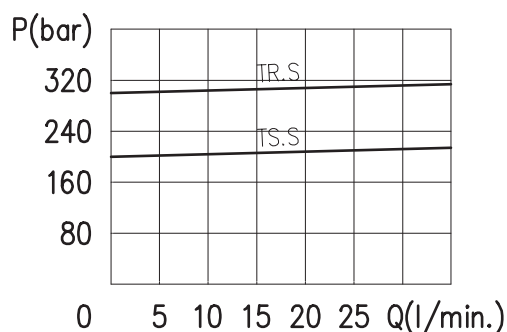
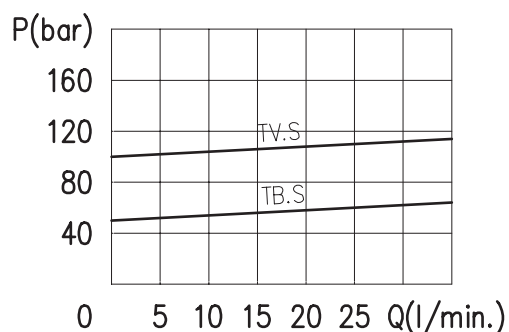
Material: internal components made out of high grade steel duly treated and fabricated.

For more information please ask our technical office .

Variations and modifications of technical features and dimensions are reserved. **OLEOSTAR S.p.A.** also reserves the right to stop production of each and any model listed in the catalogue with no notice.

Copyrights on the text contained herein belong to **OLEOSTAR S.p.A.** . Partial and full reproductions or copies of this catalogue are forbidden.

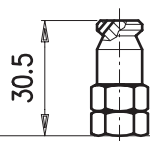
• RATING DIAGRAMS



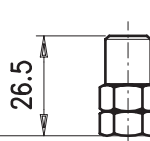
Oil viscosity 46 cSt

• ADJUSTMENTS

W



S



• CODE NUMBER

VAIF /D1S/12/OMR/□□ . □ / □□

Pressure settings (bar)

Adjustment

Body material

TB) 0÷80
TV) 50÷130
TS) 120÷250

S
W

_ Aluminium
ac Steel